



Your Health Center Guide

INFORMATION FOR EMPLOYEES

proactive **md**



CARE WITHOUT COMPROMISE

Welcome to Proactive MD

More than just an onsite clinic.

Proactive MD has partnered with your organization to provide an employer-sponsored Health Center. Now you, your spouse, and any dependents enrolled in the health plan can receive exceptional primary care whenever it's needed, at no cost to you.

Our Health Centers offer services such as family medicine, acute care, medication dispensing and prescriptions, lab work, and more. You can also take advantage of our total wellness solutions, including weight loss programs, diabetes education, stress management, smoking cessation, and wellness coaching.

Our providers and clinical care team practice medicine the way it was meant to be practiced: personally and proactively. We are here to serve you with compassion and transparency, and we promise to always fight for your greatest good. Come see what Care Without Compromise could mean for you!

MASE Trust Health Centers

Clinic Hours & Contact Information

The Health Center should be your first stop for healthcare - whether for routine care, minor illnesses, or injuries. Your Proactive MD Team will assess your symptoms and help you understand the best course of action.

Visit: mase.healthcare-redefined.com

MASE Monticello Health Center

303 N. Main Street, Monticello, IN 47960

Phone: 574.297.5527 **Phone:** 844.223.2964

Hours:

Mon: 8:00am - 6:00pm Thu: 7:00am - 5:00pm
Tue: 8:00am - 6:00pm Fri: 8:00am - 5:00pm
Wed: 7:00am - 4:00pm

Eastern Pulaski Satellite Health Center

715 School Drive, Winamac, IN 46996

Phone: 574.297.5527

Hours:

Thu: 7:00am - 4:00pm

South Newton Satellite Health Center

1388 South 50 East, Kentland, IN 47951

Phone: 574.297.5527

Hours:

Mon: 7:00am - 4:00pm

Delphi Satellite Health Center

300 W. Vine Street, Delphi, IN 46923

Phone: 574.297.5527

Hours:

Wed: 7:00am - 4:00pm

MASE Plymouth Health Center

504 Colonial Court, Plymouth, IN 46563

Phone: 574.935.0127 **Phone:** 877.289.3011

Hours:

Mon: 9:00am - 6:00pm Thu: 9:00am - 6:00pm
Tue: 7:00am - 6:00pm Fri: 7:00am - 4:00pm
Wed: 7:00am - 6:00pm

New Prairie Satellite Health Center

605 E. Michigan Street, Rolling Prairie, IN 46371

Phone: 574.935.0127

Hours:

Tue: 6:20am - 3:30pm
Thu: 1:00pm - 4:00pm

South Central Satellite Health Center

9808 South 600 West, Union Mills, IN 46382

Phone: 574.935.0127

Hours:

Thu: 7:00am - 11:00am

HAVE YOU SCHEDULED YOUR

New Patient Appointment?

Your care team can serve you better when you become an established patient.

Get to know your care team and establish yourself as a patient by scheduling a new patient appointment at the Health Center.

Becoming established will ensure increased availability during the cold and flu season. You can also receive a comprehensive physical exam that may include labs and medications ordered by the provider.

As an established patient, you will receive:

- Quicker access to appointments
- The ability to use after hours line
- Same-day sick appointments
- Less than 5-minute wait times
- Select medications and labs for free
- Disease and illness prevention
- Treatment for common illnesses & infections
- Physicals
- Wellness consulting

MASE Monticello Health Center

Phone: 574.297.5527 **Phone:** 844.223.2964

Website: <http://mase.healthcare-redefined.com>

MASE Plymouth Health Center

Phone: 574.935.0127 **Phone:** 877.289.3011

Website: <http://mase.healthcare-redefined.com>



FEELING SICK OR HURT?

Make the Health Center your first stop.

Your Proactive MD Team will assess your symptoms and help determine the best course of action, at no cost to you. Your Health Center should always be your first contact for both routine care and minor illnesses / injuries.

Every visit to the Emergency Room costs hundreds of dollars to your health plan. Before visiting the ER, call your Health Center to find out if we can help you at little or no cost.

Your Health Center Offers:

- Same-day sick appointments
- Less than 5-minute wait times
- Select medications and labs at no cost
- Wellness consulting
- STD testing
- Disease and illness prevention
- Treatments for common illness & infections
- Ear or sinus infection treatments
- Stitches placement & removal
- And more!

If you need assistance outside of normal business hours, call our After Hours Line at **877.768.0082**.

MASE Monticello Health Center

Phone: 574.297.5527 **Phone:** 844.223.2964

Website: <http://mase.healthcare-redefined.com>

MASE Plymouth Health Center

Phone: 574.935.0127 **Phone:** 877.289.3011

Website: <http://mase.healthcare-redefined.com>



6-Month Medication Consultations



Medications are dispensed for free through your Health Center when you visit the Proactive MD provider at least once every six months.

Because our providers dispense medications using their personal medical licenses, they must have an established relationship with any patient who uses their dispensing services. This ensures that they are prescribing the appropriate medications at the appropriate doses. Even if you are seeing an outside provider, you must visit the Proactive MD provider at least once every six months to continue receiving medications through the Health Center.

Call your Health Center today to schedule your next medication consultation.

MASE Monticello Health Center

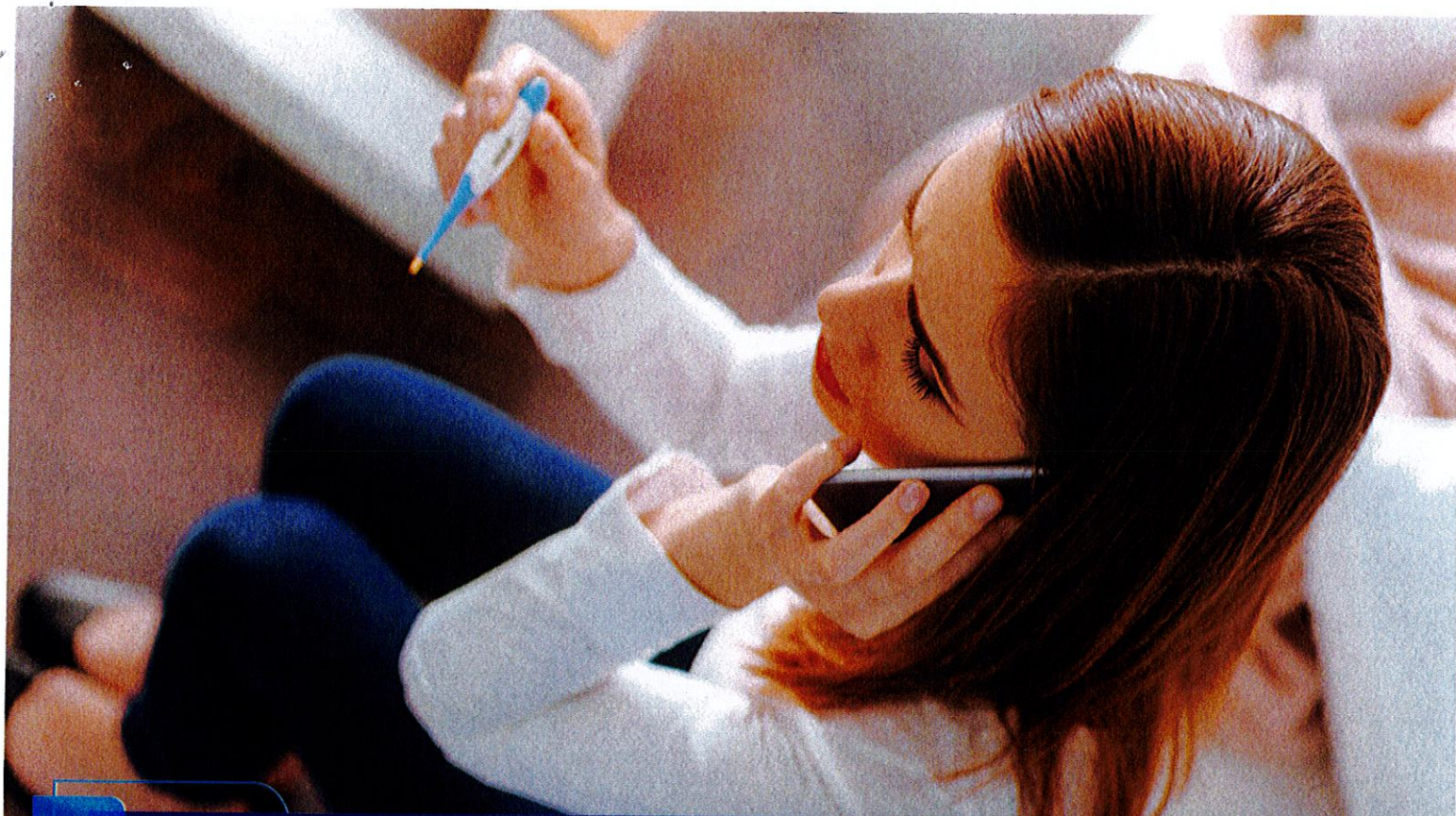
Phone: 574.297.5527 **Phone:** 844.223.2964

Website: <http://mase.healthcare-redefined.com>

MASE Plymouth Health Center

Phone: 574.935.0127 **Phone:** 877.289.3011

Website: <http://mase.healthcare-redefined.com>



After-Hours Line

877.768.0082

ACCESS TO A PROVIDER, 365 DAYS A YEAR

An on-call provider is available any time that your clinic is not open, including after clinic hours, on the weekends, and on holidays, at no additional cost.

The on-call provider can help you with:

- Understanding symptoms
- Treating minor illnesses, cuts & injuries
- Medication advice & dosing
- And much more!

**Call the
After-Hours
Line**

877.768.0082

**Leave a
voicemail**

Press "1" and leave
a detailed message

**The Provider
will return
your call!**

*No controlled substances will be filled after hours.

*Please only use the after-hours line outside of regular clinic hours.

Contact your clinic during regular hours to refill a medication or schedule an appointment.

proactive md

